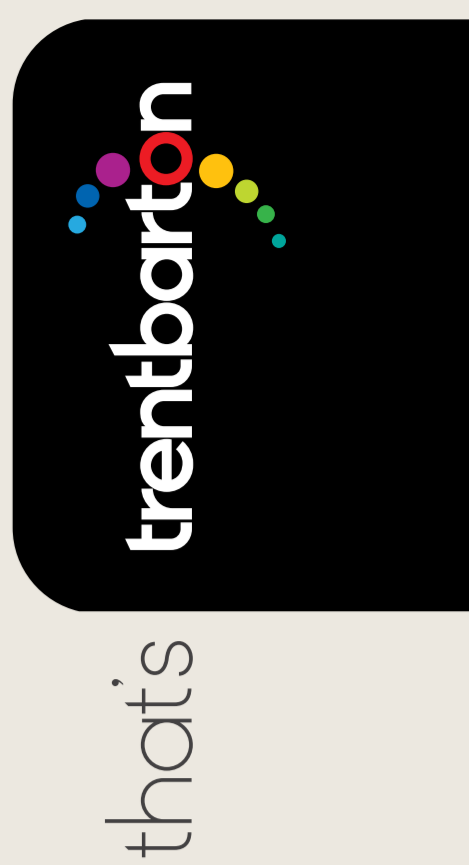
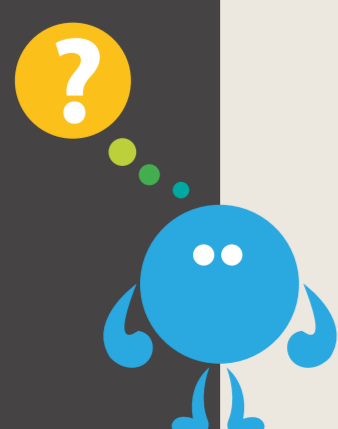


really good buses from **Ilkeston**



where to catch your bus in **Ilkeston town centre**

	towards	bus stop
— <b>black cat</b>	Derby	<b>K G E 1</b>
— <b>black cat</b>	Heanor, Eastwood, Kirkby, Sutton & Mansfield	<b>4 D F H</b>
— <b>flyer</b>	Spondon then fast to Derby	<b>K G E 1</b>
— <b>flyer</b>	Cotmanhay Farm	<b>5 D F J L</b>
— <b>my15</b>	Long Eaton, Old Sawley & East Midlands Airport	<b>3</b>
— <b>the two</b>	Nottingham	<b>K G E 3</b>
— <b>the two</b>	Cotmanhay Farm	<b>5 D F J L</b>
— <b>21</b>	Stapleford, QMC & Nottingham	<b>P N G E 2</b>
— <b>21</b>	Heanor	<b>4 D F H J L</b>
— <b>27</b>	Kimberley & Swingate	<b>4 D F H J M</b>
— <b>27</b>	Larklands	<b>P N G E 2</b>
— <b>20</b> <small>sundays only</small>	Kirk Hallam, Stapleford, QMC & Nottingham	<b>K G E 2</b>
— <b>20</b> <small>sundays only</small>	Heanor	<b>4 D F H</b>



search trentbarton land

trentbarton.co.uk