

let's protect our community

what can you do?



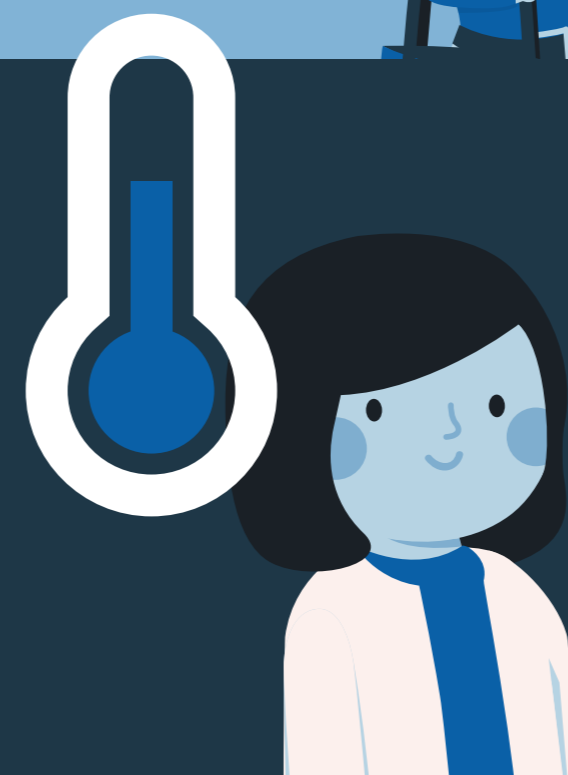
please wash your hands
before and after using
the bus, or use hand
sanitiser



please social distance
wherever possible and
leave the seats behind
the driver free



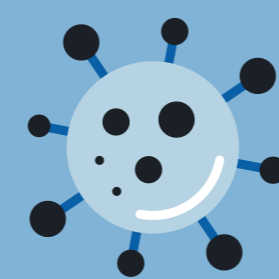
travel contactless
or use Kinchkard
if you have to use cash
please try and use
correct change



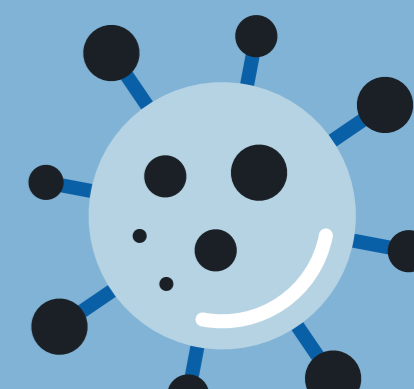
if feeling unwell or
showing any recognised
symptoms do not travel
and self-isolate



please wear a face
covering, whether a
mask, scarf, bandanna
or similar



always cough or
sneeze into a tissue
(and dispose of it)

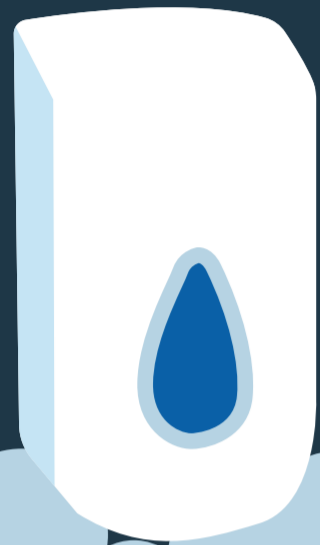
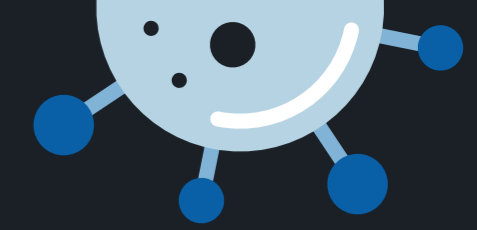


please sit at a window seat where
possible unless you share a household



let's protect our community

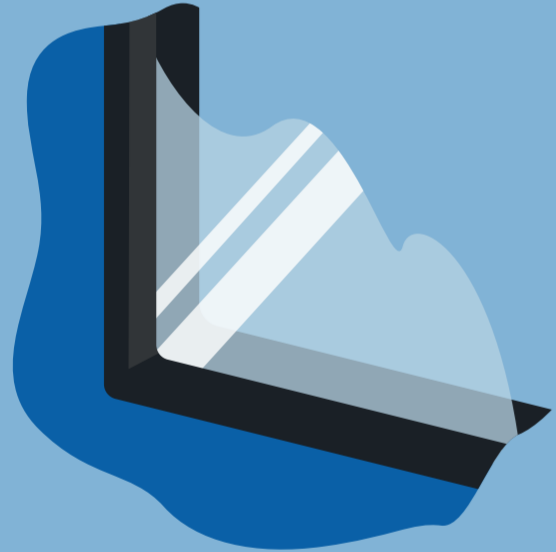
what are we doing?



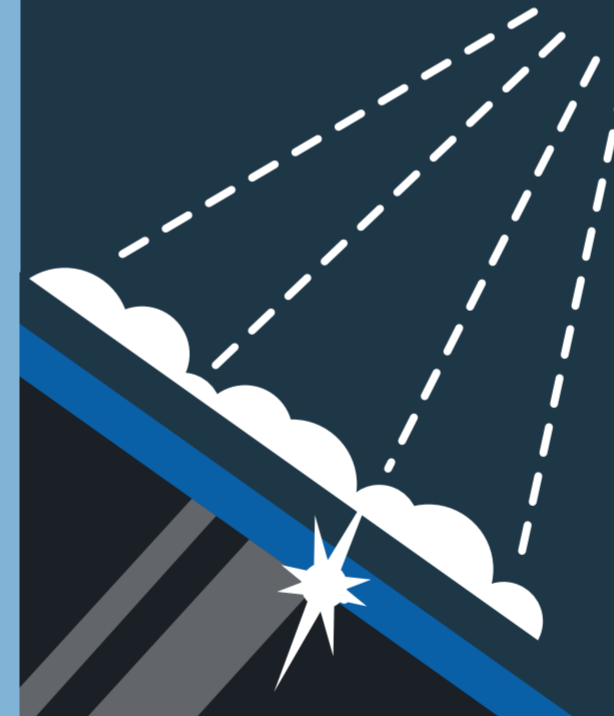
our team wash their hands before and after getting on the bus
on board hand sanitiser dispensers for customers



PPE offered to our teams including face masks, gloves, hand sanitiser and disinfectant wipes



temporary screens to form a physical barrier between you and our team



extra cleans during the day
mist disinfectant used on all buses every evening after cleaning



improved multi-step cleaning process using disinfectant paying special attention to touch points



digital thermometer checks for our team at the start of every shift